



The CedarWood Report



Summer 2017

Volume: #5 Issue: #3

CedarWood: Building on our Vision

Since its inception, CedarWood has operated out of rented space in a local church—Bethel Chapel in Mountlake Terrace, WA. When CedarWood started in early 2013 we served just 2 new families in our first week. Currently, we serve an average of 70+ families on a weekly basis. In addition to food, CedarWood also distributes coats, clothing, bedding, household items, as well as weekly meal kits to school-aged children as part of our Backpack Kids program. During our first summer we averaged about 6 food pickups a week in the back of our pickups and minivans. We now average more than 30 weekly pickups (across all 7 days in the week) utilizing a box truck and commercial van purchased through donated funds.

As we grew, we added staff and volunteers, shelving and hand-trucks, refrigerators and freezers. We began with only half of a large closet just to store dry goods, but now we feel cramped with 4 dedicated storage rooms, 2 off-site storage units, and the entire original closet! That doesn't even include the fridges and freezers we have in Bethel Chapel's gym!

The growth we experienced has required us to increase both our efficiency and our capacity. We have

improved our processes and systems to the best of our ability. We have constantly evaluated, experimented, and made significant changes in every aspect of our organization through various stages of growth so that we could effectively serve an increasing number of clients utilizing the same space. CedarWood has maxed out the capacity of our current location. This leaves us with one exciting alternative—to seek out a more spacious place of our own that will accommodate all of our needs!

The search has begun! We will not be hurrying the process as there are several factors to consider, such as sufficient floor space, parking for our CedarWood clients, proximity to public transportation for our clients, and so forth. This is a huge step for CedarWood and The World For Jesus Ministries, who is our parent organization. We believe the future growth, development, and the size of our community impact, depends on this move. This is

your opportunity to partner with us!

Your donations are vital to ensuring CedarWood's development and growth in blessing those in need with food, clothing, household items, and more! See bottom of next page for details on how to donate online or by mail. All gifts are tax-deductible.



CedarWood Director, Vivian Du Porter, sharing important Back to School resources with families in a packed-out waiting room!



CedarWood International is a division of *The World For Jesus Ministries*

Our mailing address is:

11700 Mukilteo Speedway

Suite #201-1177

Mukilteo, WA 98275

Nat'l office #: (559) 435-2423

Questions? Contact CedarWood's

Director, Vivian Du Porter, at

VivianD@worldforjesus.org

<http://www.worldforjesus.org>

CW office #: (206) 883-5132

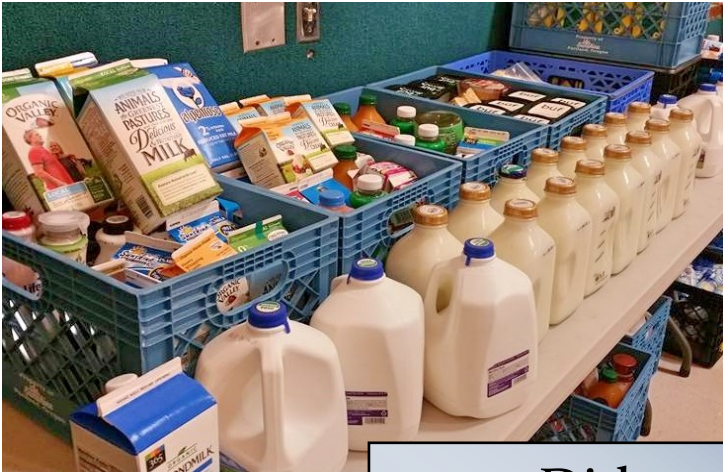




The CedarWood Report



Page 2



Did you know?

- CedarWood Pantry handled and processed over **20,000 pounds of food** in July.
- We fed just under **1200 total family members** in the same month.



Follow us on Facebook!

facebook.com/cedarwoodinternational



Get Involved!

CedarWood International needs YOUR help to build stronger families! Consider donating money, food, or even volunteer your time. Monetary donations are tax-deductible. Please write checks to World For Jesus Ministries (WFJM) and mail to the address on Page 1. Please notate "CedarWood" in the memo section of your check. Online donations also accepted at <http://worldforjesus.org/ministries>, just click the "CedarWood International" donate button to add your donation to the cart. THANK YOU!